

IMIR Information Management and Institutional Research

[Indiana University Purdue University Indianapolis](http://www.imir.iupui.edu/infore/mi/Fall95/fall95en.htm)

IUPUI Fall 1995 Enrollment Analysis

Report Prepared by:

The Office of Information Management and Institutional Research

under the guidance of the

Student Enrollment Support Services (SESS) including the following offices and units:

Admissions, Bursar, Financial Aid, Registrar, Testing Center, Student Affairs, and the Undergraduate Education Center

Fall 1995 enrollments at IUPUI increased slightly following two years of decline. Overall headcount enrollment increased by 0.6 percent to 26,939 and credit hour enrollment increased by 3.1 percent reflecting an increase in full-time students relative to part-time students. These increases were particularly striking given our initial expectations for an approximate 5 percent decrease in enrollments and also given the decreasing enrollments at most of the other IU campuses and at several other state institutions. On the other hand, other higher education institutions in the Indianapolis metropolitan area also experienced increases, including Butler University and the University of Indianapolis.

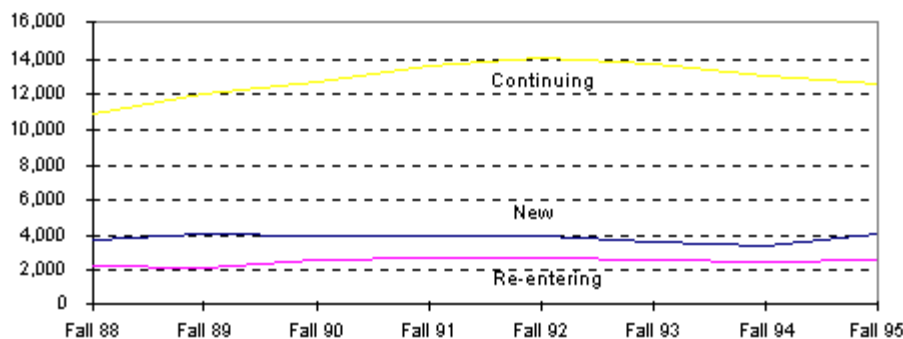
The remainder of this analysis describes some of the elements of this year's student enrollment in the context of recent trends. This analysis is followed by our Fall 1995 enrollment profile which contains many specific views of the numbers.

Increases in New Undergraduates

Fall 1995 enrollments were characterized by significant increases in full-time degree seeking undergraduate students but no overall change in enrollments in graduate and professional programs. In contrast, the prior two years were characterized by decreases in undergraduate enrollments that were slightly offset by increases in graduate and professional enrollments. More specifically, the 1995 enrollment increase was dominated by increases in new beginners and transfers as well as a slight rebound in the number of re-entering students. The number of students continuing from the previous Spring Semester continues to decline. Display 1 illustrates these trends.

Display 1. Trends in Undergraduate Degree-Seeking Student Enrollment
Fall Semesters 1988 through 1995

	Fall 88	Fall 89	Fall 90	Fall 91	Fall 92	Fall 93	Fall 94	Fall 95	% chg 94-95
New	3,717	4,098	3,952	3,988	3,997	3,587	3,340	4,055	21.4%
Re-entering	2,227	2,159	2,528	2,735	2,718	2,486	2,391	2,569	7.4%
Continuing	10,836	12,041	12,729	13,640	14,022	13,794	13,120	12,571	-4.2%
Total	16,780	18,298	19,209	20,363	20,737	19,867	18,851	19,195	1.8%

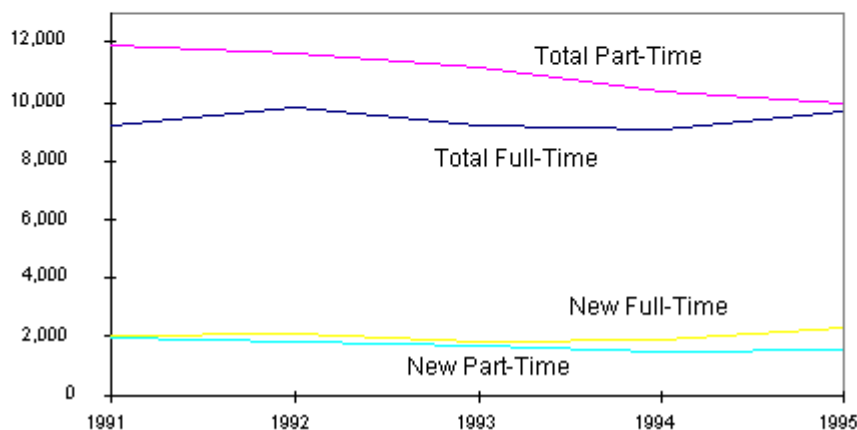


A Shift Toward Full-Time Students

For 1995, IUPUI continues to experience a shift towards more full-time students, relative to part-timers. Part of this shift can be attributed to the increases in new beginners who tend to include higher proportions of full-timers than our upperclass population. Display 2 shows the upsurge in full-time enrollments, especially among new students this fall. Overall part-time enrollments have steadily declined over the past five years but the number of new part-timers increased modestly this semester. For the Fall 1995 semester, there are almost equal numbers of full- and part-time students at IUPUI.

Display 2. Trends in Full- and Part-Time Undergraduate Enrollment, Fall 1991 through Fall 1995

	1991	1992	1993	1994	1995	% Chg 94-95
Total Undergraduate Enrollment						
Full-Time	9,241	9,825	9,216	9,081	9,676	6.1 %
Part-Time	11,916	11,621	11,176	10,402	9,991	-4.1 %
Matriculants						
Full-Time	2,036	2,094	1,837	1,877	2,337	19.7 %
Part-Time	1,950	1,804	1,658	1,475	1,586	7.0 %



Retention Remains a Puzzle

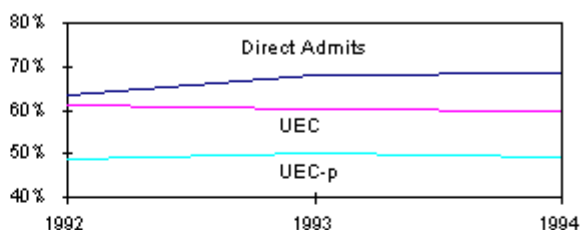
As indicated above, the increase in enrollments at IUPUI is attributable almost entirely to new students, with some notable increase in students returning to IUPUI after taking some time off. The decrease in numbers of students continuing from last Spring can be partly attributed to the record number of undergraduate degrees conferred last academic year. But, aside from this "emptying of the pipeline," IUPUI is experiencing some mixed changes with regard to continuing student retention.

Displays 3 shows the change in rate of retention to the second year among first-time baccalaureate students for the last three year's entering cohorts. Retention among full-time beginners increased significantly from the 1992 to the 1993 cohort and then held relatively steady from the 1993 to 1994 cohorts. Changes in the retention rate among part-time beginners are mixed but overall suggest a slight downward trend.

Display 3. *Retention to Second Year of New Matriculants*

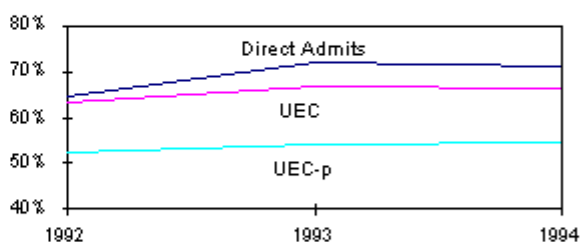
All Baccalaureate Beginners

	1992	1993	1994
Direct Admits	63.4%	68.1%	68.6%
UEC	61.0%	60.2%	59.7%
UECP	48.7%	50.0%	49.2%



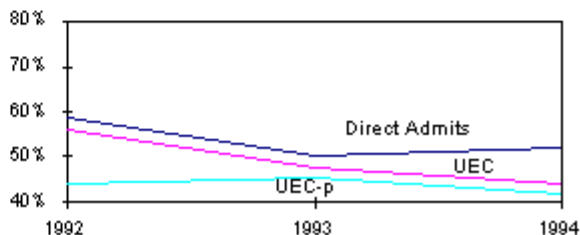
Full-Time Baccalaureate Beginners

	1992	1993	1994
Direct Admits	64.5%	71.8%	71.2%
UEC	63.5%	66.5%	66.1%
UECP	52.6%	54.1%	54.4%



Part-Time Baccalaureate Beginners

	1992	1993	1994
Direct Admits	58.6%	50.0%	52.3%
UEC	56.1%	47.8%	44.1%
UECP	44.2%	45.4%	42.2%



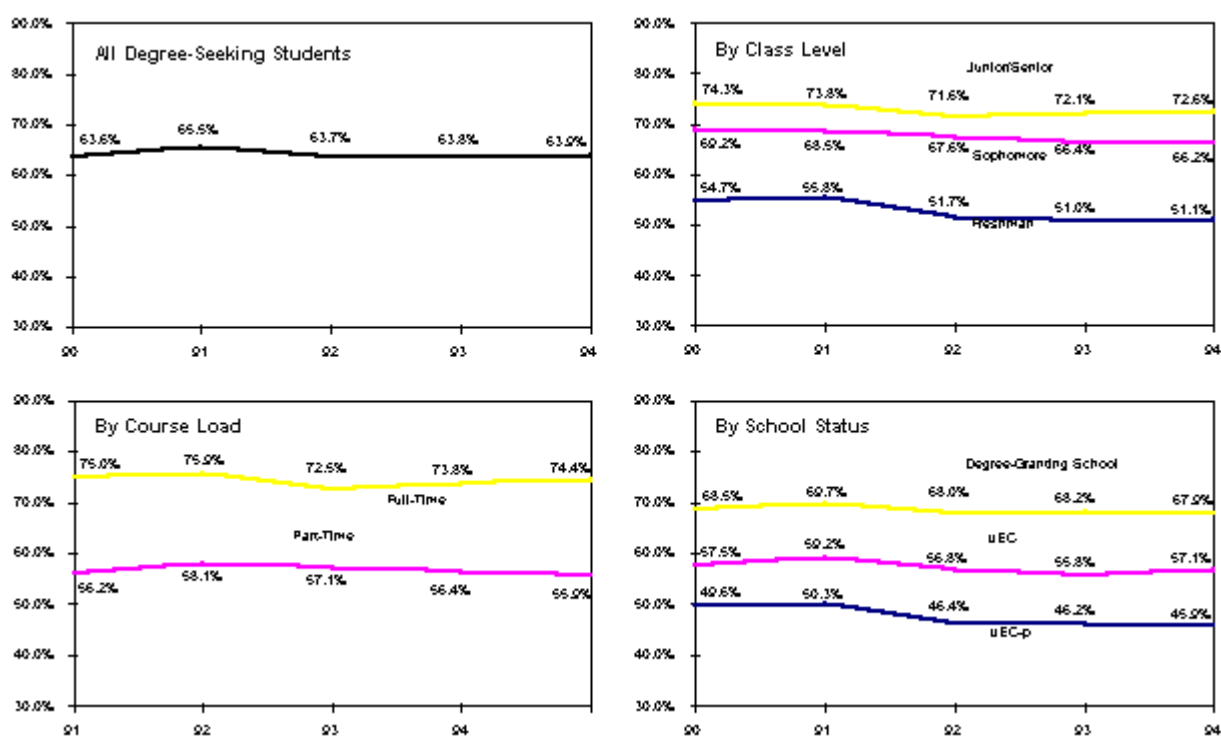
Display 4 shows the change in Fall to Fall retention among all undergraduate degree seeking students over the past five years. These rates are determined by taking the entire degree-seeking undergraduate student population for a Fall Semester, removing from that group any student who receives an undergraduate degree between that semester and the subsequent Fall Semester, and then determining the percentage of the remaining students who have enrolled in for the subsequent Fall Semester. Overall, fall to fall retention has hardly changed, creeping up by 0.1% over each of the last three years after a 1.8% decline between the 1991 and 1992 cohorts which followed a 1.9% increase from 1990 to 1991.

The lower left hand panel of Display 4 shows that the past three years have seen a rebound in

retention among full-time students offset by nearly equal declines in retention among part-time students. The upper right hand panel of the display shows the higher retention rates among upperclass students compared to lower division students, with a slight increase in the upperclass student retention rate compared to the steady state of the sophomore and freshman rates. Finally, the lower right panel of Display 4 shows increasing retention among non-preparatory students in the Undergraduate Education Center with very slight decreases among the other two groups--students in a degree-granting school and students in the UEC preparatory program.

This last panel stands in contrast to the changes in retention by school status for first-year students shown in Display 3 where retention among UEC beginners declined slightly while retention among student directly admitted into degree-granting schools increased slightly. This difference in trends among new matriculants and all enrolled students may be partly attributable to a significant decline in the number of dismissals among students in the Undergraduate Education Center (UEC regular program dismissals decreased from 9.7% of all students in 1994 to 7.4% in 1995; UECp dismissals decreased from 14.0% to 7.1%).

Display 4 . Fall to Fall Retention for All Undergraduate Degree-Seeking Students, Base Year Fall 1990 through 1994



In summary, one year retention rates among IUPUI students show mixed trends between full- and part-timers, new cohorts and continuing cohorts, and students in degree-granting schools and those in the UEC. One might have expected overall rates to increase with the shift to increasing proportions of full-time students. However, notable decreases in part-time student retention appear to have offset these gains. In spite of the continued trend towards larger proportions of full-timers, the prognosis for next year's retention rates is somewhat downgraded by increasing numbers of freshman and particular preparatory students who tend to leave at higher rates than upperclass and non-preparatory students. On the other hand, recent student and academic support initiatives may succeed at retaining larger numbers from among this at risk group. It is clear that any notable increases in our retention rates for next year will require a concerted effort among the entire IUPUI community.

From Whence Come the New Students

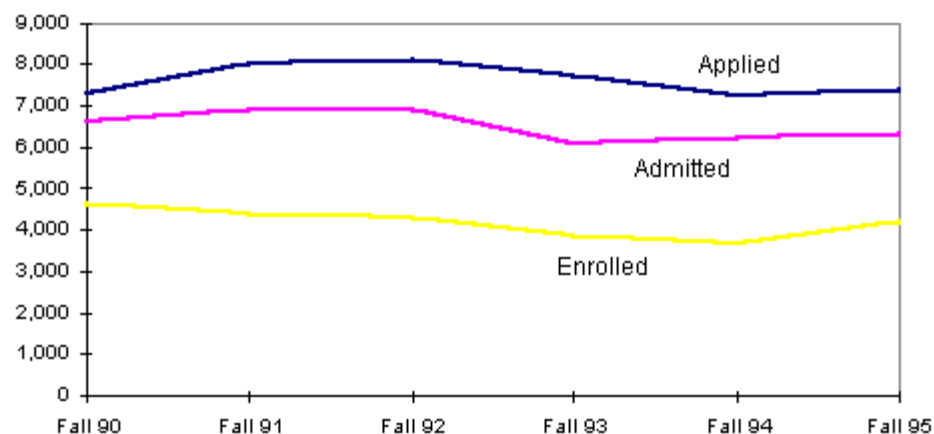
The large increase in new students was particularly remarkable since the number of applications among undergraduates did not increase all that much. Display 5 shows the trends in admissions activity over the last six fall semesters. Beginner and transfer applications increased modestly from Fall 1994 to Fall 1995, but did not reach the Fall 1993 level. The rate at which students were admitted was only slightly increased from last year and was similar to all but the notably lower admit rate of Fall 1993. What increased remarkably was the yield rate, that is, the percentage of admitted students who ultimately enrolled for classes.

One notable difference in admissions activity this Fall, was our non-enforcement of the June 1 priority date for application. In past years, students were encouraged to apply by June 1, applications were accepted readily through the end of June, but relatively few applicants beyond July 1 were considered for admission: late applicants were not sought out and those who inquired were encouraged to apply either as a non-degree student or to defer entry to the Spring semester. This year, admissions were not only accepted through July and August, but were, in fact, promoted through IUPUI's newspaper and TV commercials as well as through extended hours and increased phone contact capacity among our entering student support service offices.

The last row of Display 5 shows the trend in enrollments among inter-campus transfers. The numbers of students coming to IUPUI from other IU campuses appears to be holding steady at just under 1,000. IUPUI continues to be a net importer of students among the IU campuses: the 1,000 student in-migration is offset by typically half as many students leaving IUPUI for another IU campus. The majority of the traffic among IU campuses (over three-quarters of the migration) is between Indianapolis and Bloomington.

Display 5. New Student Admissions, Fall 1990 through 1995

	Fall 90	Fall 91	Fall 92	Fall 93	Fall 94	Fall 95	% Chg 94-95
Beginners							
Applied	4,301	4,937	4,823	4,652	4,194	4,427	5.6%
Admitted	3,994	4,456	4,254	3,688	3,652	3,876	6.1%
Admit Rate	92.9%	90.3%	88.2%	79.3%	87.1%	87.6%	
Enrolled	2,735	2,790	2,563	2,316	2,057	2,523	22.7%
Yield	68.5%	62.6%	60.2%	62.8%	56.3%	65.1%	
Transfers							
Applied	1,861	2,476	2,639	2,567	2,368	2,503	5.7%
Admitted	1,519	1,882	2,080	1,958	1,936	2,064	6.6%
Admit Rate	81.6%	76.0%	78.8%	76.3%	81.8%	82.5%	
Enrolled	1,154	1,232	1,339	1,196	1,151	1,377	19.6%
Yield	76.0%	65.5%	64.4%	61.1%	59.5%	66.7%	
Non-Degree							
Applied	1,103	566	611	494	681	437	-35.8%
Admitted	1,101	564	555	459	628	409	-34.9%
Admit Rate	99.8%	99.6%	90.8%	92.9%	92.2%	93.6%	
Enrolled	735	358	403	333	455	314	-31.0%
Yield	66.8%	63.5%	72.6%	72.5%	72.5%	76.8%	
Total							
Applied	7,265	7,979	8,073	7,713	7,243	7,367	1.7%
Admitted	6,614	6,902	6,889	6,105	6,216	6,349	2.1%
Admit Rate	91.0%	86.5%	85.3%	79.2%	85.8%	86.2%	
Enrolled	4,624	4,380	4,305	3,845	3,663	4,214	15.0%
Yield	69.9%	63.5%	62.5%	63.0%	58.9%	66.4%	
Intercampus							
Transfers	999	1071	987	966	946	968	2.3%

**Time of Admission**

Display 6 compares the admissions activity for the past two years through June 1 and in the months of June, July, and August. The yield rate is traditionally higher among those students who apply during the later months, as might be expected. Comparing the two years shows how two factors worked to increase our Fall 1995 enrollments. First, the yield rate (rate increases shown in the outlined cells of the display) increased for students admitted at all stages but especially for those admitted in August. Second, the number of students admitted in July and August increased by just under 60 percent.

Display 6. Admissions Activity by Time Period, Fall 1994-95

	Fall 1994	Fall 1995	Change	
			N	%
Total				
Admitted	6,223	6,361	138	2.2%
% Tot Adm	100.0%	100.0%		
Enrolled	3,667	4,215	548	14.9%
Yield	58.9%	66.3%		7.3%
Through June 1				
Admitted	4,465	4,050	-415	-9.3%
% Tot Adm	71.7%	63.7%		
Enrolled	2,454	2,452	-2	-0.1%
Yield	55.0%	60.5%		5.6%
6/2 thru 6/30				
Admitted	821	814	-7	-0.9%
% Tot Adm	13.2%	12.8%		
Enrolled	569	595	26	4.6%
Yield	69.3%	73.1%		3.8%
July				
Admitted	466	744	278	59.7%
% Tot Adm	7.5%	11.7%		
Enrolled	337	587	250	74.2%
Yield	72.3%	78.9%		6.6%
August				
Admitted	471	753	282	59.9%
% Tot Adm	7.6%	11.8%		
Enrolled	307	581	274	89.3%
Yield	65.2%	77.2%		12.0%

Changes in Feeder High Schools

IUPUI receives most of its "traditional" students from Central Indiana high schools, although more so from the Marion County township school systems and the surrounding counties than from the Indianapolis Public School system. Display 7 depicts the level of admission activity from these local areas as well as from the rest of Indiana and out-of-state. These numbers reflect activity among students who have graduated from high school in the same year or one year prior to applying to IUPUI. The second to last column of Display 7 contains the percentage change in application, admits, and enrollments between 1994 and 1995 as well as the absolute difference in yield rates (the outlined cells). The final column of the table contains the differences between the percentage changes for each particular group and the overall percentage changes for all students combined. Since admissions activity is increased across all areas, the last column represents relative differences in the rate of increase compared to the overall rates of change.

Compared to the Fall 1994 Semester, application and admissions to IUPUI among these "traditional" students increased by 7.5 percent. Enrollments were up by nearly 25 percent due to an increase in yield rate from just under 50 percent to over 57 percent. In percentage terms, the biggest changes in admission activity was among IPS graduates and out-of-state applicants--traditionally the two smallest sources of students. Applications from other Indiana students outside of IPS increased at a slower but uniform rate. The yield rate (percent of admitted students who enroll) increased most for Marion County high school graduates, both from IPS and the township school districts, but it was higher for all groups. In terms of overall numbers, IUPUI

continues to obtain the largest proportion (about 35%) of beginner students from the Marion County township school systems (e.g., Lawrence, Wayne, Washington, Perry, etc.). School systems from the surrounding counties feed IUPUI approximately 30 percent of our beginners and another 25 percent come from other parts of the state. Despite its proximity, IPS feeds IUPUI just over 8 percent of our first-time first-year students.

Display 7. Admissions Activity by Geographic Origin: First-Time Students Who Graduated From High School in the Same Year or One Year Prio to Applying to IUPUI

	1991	1992	1993	1994	1995	Pct. Change 94-95	
						%	Deviation from Total
Indianapolis Public Schools							
Applications	237	259	240	206	243	18.0%	10.5%
Admitted	214	220	159	169	215	27.2%	19.8%
Adm Rate	90.3%	84.9%	66.3%	82.0%	88.5%		
Enrolled	173	143	106	108	158	46.3%	22.6%
Yield	73.0%	55.2%	44.2%	52.4%	65.0%	12.6%	5.1%
Other Marion County							
Applications	1048	1134	1130	997	1057	6.0%	-1.5%
Admitted	977	1037	962	910	957	5.2%	-2.2%
Adm Rate	93.2%	91.4%	85.1%	91.3%	90.5%		
Enrolled	694	658	633	537	678	26.3%	2.6%
Yield	66.2%	58.0%	56.0%	53.9%	64.1%	10.3%	2.8%
Surrounding Counties							
Applications	919	973	1059	931	986	5.9%	-1.6%
Admitted	873	905	899	840	885	5.4%	-2.0%
Adm Rate	95.0%	93.0%	84.9%	90.2%	89.8%		
Enrolled	621	564	568	508	588	15.7%	-7.9%
Yield	67.6%	58.0%	53.6%	54.6%	59.6%	5.1%	-2.4%
Other Indiana							
Applications	694	788	850	875	926	5.8%	-1.7%
Admitted	607	697	659	761	798	4.9%	-2.5%
Adm Rate	87.5%	88.5%	77.5%	87.0%	86.2%		
Enrolled	356	350	375	379	464	22.4%	-1.3%
Yield	51.3%	44.4%	44.1%	43.3%	50.1%	6.8%	-0.7%
Out-of-State							
Applications	125	112	120	133	166	24.8%	17.3%
Admitted	104	103	103	111	142	27.9%	20.5%
Adm Rate	83.2%	92.0%	85.8%	83.5%	85.5%		
Enrolled	35	45	33	34	49	44.1%	20.4%
Yield	28.0%	40.2%	27.5%	25.6%	29.5%	4.0%	-3.5%
Total							
Applications	3023	3266	3399	3142	3378	7.5%	
Admitted	2775	2962	2782	2791	2997	7.4%	
Adm Rate	91.8%	90.7%	81.8%	88.8%	88.7%		
Enrolled	1879	1760	1715	1566	1937	23.7%	
Yield	62.2%	53.9%	50.5%	49.8%	57.3%	7.5%	

Note. The percentages in the outlined cells represent the absolute difference in yield rate between 1994 and 1995, not the percentage change.

New Students' School Status

With the notable increase in the number of admitted students who chose to enroll at IUPUI, one might expect some shifts in where students are enrolling. Display 8 shows that the increases were larger among students enrolling in the regular and preparatory programs of the Undergraduate Education Center compared to those enrolling directly into one of IUPUI's schools. This shift in enrollments represents a return to earlier year's distributions. That is, the 1994 entering class had relatively higher proportions of students entering directly into schools compared to other recent years.

Display 8. Trends in New Student Enrollment by School Status

	1991	1992	1993	1994	1995	% Chg 94-95
Number						
Direct Admits	1,325	1,332	1,170	1,242	1,322	6.4%
UEC	1,100	1,056	978	897	1,130	26.0%
UEC-p	1,438	1,400	1,258	1,072	1,353	26.2%
Transient	123	110	89	141	118	-16.3%
TOTAL	3,986	3,898	3,495	3,352	3,923	17.0%
Percent						
Direct Admits	33.2%	34.2%	33.5%	37.1%	33.7%	
UEC	27.6%	27.1%	28.0%	26.8%	28.8%	
UEC-p	36.1%	35.9%	36.0%	32.0%	34.5%	
Transient	3.1%	2.8%	2.5%	4.2%	3.0%	

Within the academic units, there were some notable changes as to where new students enrolled. The table on page 2 of the enclosed five year trend profile of 'New to IU' students shows marked increases in new student enrollments in Engineering and Technology, Science, and Continuing Studies. Other programs and schools exhibiting positive changes include Business, IUPUI Columbus, Education, Herron, Physical Education and the RHIT program. A notable decrease in new student enrollments occurred in Liberal Arts with smaller decreases among Transient (non-degree) and Allied Health majors.

Trends in SAT Scores and High School Rank

Display 9 shows the average SAT scores and high school class rank of new first-time students at IUPUI over the past five years. Overall, average SAT scores slipped by five points from 835 to 826. This decline can be partly attributed to the shift in distribution of new students back to the UEC: declines in average SAT scores within each group were smaller than the overall change. On the one hand, these declines represent a retreat from IUPUI's highest average SAT scores in the recent past that was achieved by last year's entering class which was also one of IUPUI's smallest entering classes. On the other hand, these changes come at a time when the average SAT score nationally and for Indiana test-takers rose by five points. Finally, there was very little change in the average high school class rank among our new first-time students. The one point decline overall is due to the larger numbers of UEC students relative to direct admits since the average percentile ranking did not go down within any group.

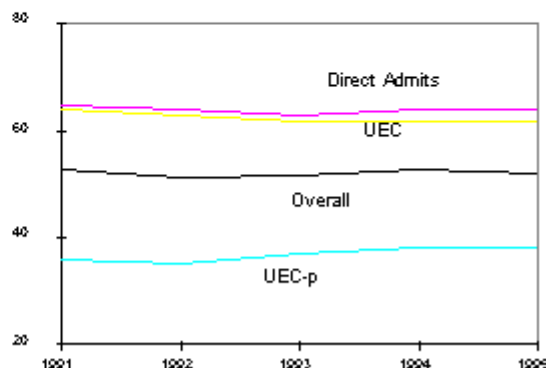
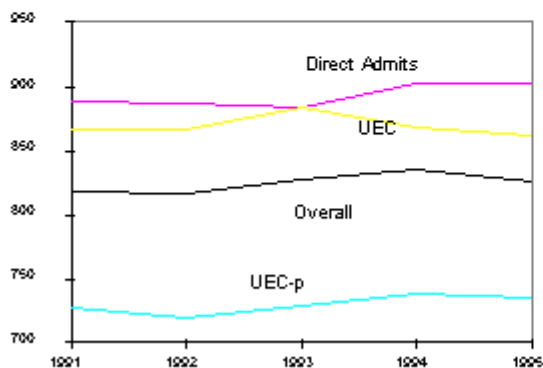
Display 9. Quality of New Matriculants

SAT Total

	1991	1992	1993	1994	1995
Total	819	817	827	835	826
Direct Admits	889	887	885	903	902
UEC	868	868	885	869	863
UECP	727	720	729	738	735

High School Class Rank

	1991	1992	1993	1994	1995
Total	53	52	52	53	52
Direct Admits	65	64	63	64	64
UEC	64	63	62	62	62
UECP	36	35	37	38	38

**Financial Aid Considered**

Other aspects of the Fall 1995 enrollment and recent trends were examined for clues to understanding this year's increases, especially in the yield rate. For example, there were no significant changes in applications for financial aid or in grant awards that appeared to be related to these changes.

Other Shifts in Overall Enrollment**A Younger Student Population**

The shift toward more full-time and away from part-time student enrollments was noted early in this analysis. These changes are closely related to our taking in many more new traditional-aged undergraduate students and our losing through graduation or attrition a significant number of non-traditional (older and/or part-time) students. Corresponding to these changes, the age distribution of our students shifted. The first page of the enclosed IUPUI Student Profile Five Year Trend Report shows how our numbers of certain specific age groups increased and declined. For example, we experienced the largest increase in 18 to 20 year olds and the greatest declines in 23 to 24 year olds and 33 to 39 year olds. On other hand, we experienced increasing numbers of students aged 40 and older. These changes support the notion that what we are gaining in new traditional-aged students, we are losing in mid-career workers who may be less likely to take courses when the area economy is as strong as it is currently.

Notable changes in School Major Enrollments

The changes in enrollment affect IUPUI's diverse schools in different ways as shown in the enclosed five year trend reports. As might be expected, the largest increases in enrollments occurred in the programs of the Undergraduate Education Center. Altogether UEC enrollments increased by 519 between 1994 and 1995. Given that our overall headcount enrollment increased by only 173 students, the number of students enrolled in degree-granting majors declined. Other

schools that experienced increases in enrollments included Science (up 127 students or 9.8%), Social Work (up 67 students or 14%), Herron (up 46 or 9.3%), and Continuing Studies (up 30 or 4.9%). In addition, enrollments increased among graduate, non-degree students (up 80 or 5.9%) and among several small programs including Restaurant, Hotel, and Institutional Tourism Management (up 36 or 38.3%) and Library and Information Science (up 24 or 19.2%). Student major enrollment decreases were most notable for Nursing (down 239 or 13.9%), Liberal Arts (down 191 or 9.3%) and Engineering and Technology (down 103 or 4.9%; in spite of an increase in new students as noted earlier).

Changes in Course Credit Hour Enrollments

The attached reports focus on student headcount enrollments. Display 10 below illustrates the impact these changes have had on course enrollments. Specifically, the large increases in new traditional undergraduate students has created a large demand for the general education and remedial courses in the Schools of Science and Liberal Arts. Course enrollments in Science rebounded from a two year decline to reach their second highest level ever. Liberal Arts enrollment increases reversed one year of decline but are still over 5 percent below their highest levels in the early 1990s. It is also interesting to note credit hour enrollment increases in Allied Health and Public and Environmental Affairs despite slight major enrollment declines this past year. In addition, Nursing course enrollments declined by only 1.4% despite the large decrease in student majors. Finally, course enrollments at IUPUI Columbus increased by nearly five percent this past year which resumes the upward trend in course enrollments at Columbus after the steady state of the previous two years.

Display 10. Trends in Credit Hour Enrollment by School, Fall 1991 through 1995

	1991	1992	1993	1994	1995	Avg % Chg 90-95	% chg 94-95
IUPUI Total	241,739	249,560	240,482	235,628	242,732	0.1%	3.0%
Science	55,808	59,985	56,590	55,793	59,278	1.5%	6.2%
Liberal Arts	58,066	58,449	53,895	49,699	52,222	-2.6%	5.1%
Medicine	20,600	21,054	20,995	20,621	20,791	0.2%	0.8%
Business	14,571	14,420	13,745	14,126	14,343	-0.4%	1.5%
Eng & Tech	18,767	18,656	17,309	15,885	14,010	-7.0%	-11.8%
Education	12,704	13,284	13,184	13,012	13,290	1.1%	2.1%
Nursing	12,988	12,570	12,836	12,464	12,286	-1.4%	-1.4%
Law	10,361	10,031	10,252	10,533	10,839	1.1%	2.9%
Dentistry	7,943	8,577	7,556	7,899	8,157	0.7%	3.3%
SPEA	6,245	8,056	8,177	8,161	7,570	4.9%	-7.2%
Allied Health	4,356	5,135	6,080	7,118	7,348	14.0%	3.2%
Social Work	5,470	5,324	5,309	5,344	6,280	3.5%	17.5%
Herron	6,121	6,261	6,029	5,898	6,076	-0.2%	3.0%
Physical Education*	3,905	4,166	4,932	4,941	5,588	9.4%	13.1%
Music	1,842	1,689	1,651	2,010	2,194	4.5%	9.2%
Library & Info Sci	588	552	617	715	898	11.2%	25.6%
Journalism	804	753	799	831	844	1.2%	1.6%
Other	318	343	315	330	387	5.0%	17.3%
Military Science	283	256	211	248	332	4.1%	33.9%
Arts & Sciences	113,874	118,434	110,485	105,492	111,500	-0.5%	5.7%
Health Programs	37,944	38,759	39,911	40,203	40,425	1.6%	0.6%
All Other	89,922	92,367	90,086	89,933	90,808	0.2%	1.0%
IUPU Columbus	9,562	10,863	11,114	11,005	11,487	4.7%	4.4%

*Includes RHIT courses

Implications

There are several notable success stories in our unexpected enrollment increases as well as several problematic issues. On the positive side, it appears that our efforts to attract new first-time and re-entering students have worked. This is especially true for those efforts and processes that turn an admitted student into an enrolled student. The single most notable change in our enrollments was related to an increase in percentage of admitted students who chose to enroll at IUPUI. This was true no matter when the student applied or from where they came.

Many new students decided to come to IUPUI late in the traditional cycle. It appears that our ability to accommodate last minute enrollments may be an inherent aspect of being an urban university whose students attempt to balance competing obligations. There is concern over whether such students are sufficiently prepared for college-level classes. This concern is particularly vexing given the apparent intractability of the retention problem at campuses like ours. Despite some notable efforts at increasing retention among IUPUI students, there has been little change in the overall campus rates. This suggests that these efforts would need to be expanded if they are to have an impact campus-wide. This is especially true when such factors as a strong economy are making it difficult for IUPUI to compete with positive employment opportunities for students' time and attention.

The present analysis merely scratches the surface regarding trends that have led to 1995 student enrollments at IUPUI. As a descriptive analysis it primarily serves to raise questions rather than to

answer them. Any suggestions and conclusions derived from these data can only be tentative. Several efforts to explore in depth the circumstances and factors that affect our enrollments are currently underway and several more are likely to be initiated in the coming months. Members of the campus community who are interested in participating in these efforts and in the general dialog are encouraged to contact the Office of Information Management and Institutional Research.

Appendices:

IUPUI Student Profile, Fall 1995

- [Summary: At A Glance](#) (Chart)
- [Enrollment Level](#): by Gender, Marital Status, Residency, Ethnicity, Student Level, Age Group and School Affiliation
- [Gender](#) : by Enrollment Level, Marital Status, Residency, Ethnicity, Student Level, Age Group and School Affiliation.
- [Marital Status](#): by Enrollment Level, Gender, Residency, Ethnicity, Student Level, Age Group and School Affiliation.
- [Residency](#): by Enrollment Level, Gender, Marital Status, Ethnicity, Student Level, Age Group and School Affiliation
- Ethnicity
- Student Level (Undergraduate, Graduate, Professional)
- Age Group

IUPUI 'New to IU' Undergraduate Matriculants, Fall 1995

- [Summary: At A Glance](#) (Chart)
- Enrollment Level
- [Gender](#)
- [Marital Status](#)
- Residency
- Ethnicity
- Student Level
- Age Group

IUPUI Five Year Enrollment Analysis

- [Enrollment Level](#) (Full-Time / Part-Time)
- [Gender](#)
- [Marital Status](#)
- [Residency](#)
- [Ethnicity](#)
- [Student Level](#) (Undergraduate, Graduate/Professional)
- [Student FTE by Level](#) (Undergraduate, Graduate/Professional)
- [Age Group](#)
- School Affiliation

Back to [Information Management and Institutional Research](#) Home Page.

Please [click here](#) to respond with any comments or questions.

Last Updated: August 9, 1996