


Gen Ed

Researching the Effects of an Integrated Approach

IUPUI Assessment Institute
October 2008



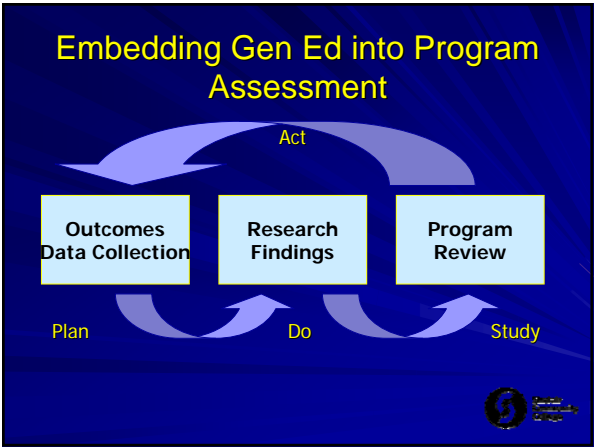
Gen Ed Outcomes: Embedded throughout Curriculum

Connected to all courses

- Course development software prompts identification of General Education Outcomes being taught or met in every course

The Process for Gen Ed College wide Assessment


- Benchmarked best practices
- Developed process for College Wide Assessment
- Developed Gen Ed Five Year Assessment Cycle



General Education Competencies	'05-6	'06-7	'07-8	'08-9	'09-10	'10-11
Computer Literacy	SCC 101 Capstones			SCC 101 Capstones		
Critical Thinking/Problem Solving			SCC 101 Capstones			SCC 101 Capstones
Information Literacy	SCC 101 Capstones			SCC 101 Capstones		
Oral Communication		SCC 101 Capstones			SCC 101 Capstones	
Values/Citizenship/Community			SCC 101 Capstones			SCC 101 Capstones
Written Communication		SCC 101 Capstones			SCC 101 Capstones	

Methodology for Gen Ed Measures

- Developed self assessment instrument
 - Based on rubric
- Distributed instrument in courses
 - All First Year Experience students (SCC 101)
 - All capstone students
- RAR collects data and provides results
- Results shared with faculty
- Improvements documented



Integration

- Measurable General Education outcomes
 - CMT search
- CMTv2
 - Chronicle, analyze, and document results-based curricular improvements
- Improvements made and documented via Program Review and Annual Updates



Program/Department Annual Update

- Program outcome direct measures are on a rotational cycle for:
 - Data collection
 - Analysis of results
 - Documentation of improvements

Program Outcomes	06-07	07-08	08-09	09-10	10-11
PO #1	Direct measure data are collected	Direct measure data are analyzed	Document improvements		
PO #2		Direct measure data are collected	Direct measure data are analyzed	Document improvements	
PO #3			Direct measure data are collected	Direct measure data are analyzed	Document improvements
PO #4				Direct measure data are collected	Direct measure data are analyzed
PO #5					Direct measure data are collected

GEN ED: RESEARCHING THE EFFECTS OF AN INTEGRATED APPROACH

General Education at Sinclair Community College has undergone a shift to ensure an integrated approach, such that all levels of General Education (foundational, skills transfer, and skills analysis and synthesis) occur throughout the curriculum. This process ensures an integrated approach to building general education in all the courses of the college and to generating general education assessment at many levels and in many courses., so that all instructional areas are able to document results and discover improvement areas to ensure that student learning outcomes in general education areas are being met.

Information, tools, and resources about Sinclair's general education can be found at the website:

<http://www.sinclair.edu/about/learning/gened/>

<http://www.sinclair.edu/administrative/vpi/studentsuccess/>

Presenter Names	Email	Phone
Lori Zakel Chair, College-wide General Education Committee Chair and Professor, Communication Arts	lori.zakel@sinclair.edu	937-512-2812
Teresa Prosser Chair, College-wide Assessment Committee Chair and Professor, Academic Foundations	teresa.prosser@sinclair.edu	937-512-2885
Sue Merrell Dean of Business and Public Services Division Former Director of Curriculum and Assessment	sue.merrell@sinclair.edu	937-512-2917

Poster Session/IUPUI Assessment Institute
October 27, 2008